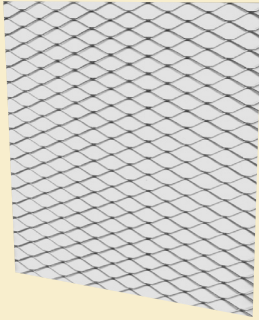


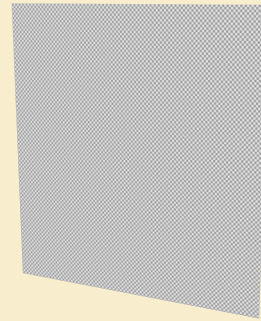
Louver Accessories

Bird Screen



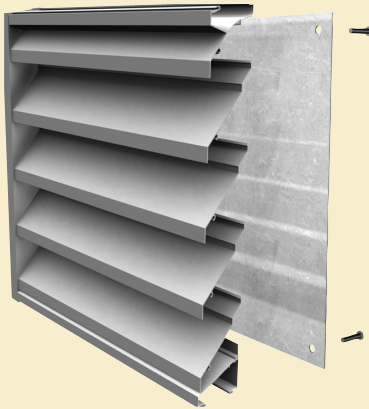
Bird screens are ½" (12.7mm), ¾" (19.1mm) or 1" (25.4mm) mesh, 0.063" (1.60mm) diameter screen in non-rewirable U-shaped frames for permanently securing screen mesh. Bird screens are available in expanded aluminum and expanded aluminum with frame construction. Gauges available – 051, 16 and 19 ga. Available for interior or exterior mounting.

Insect Screen



Insect screens are 18 x 16 (1.4 x 1.6 mm) mesh, 0.012" (0.30mm) diameter screen in non-rewirable U-shaped frames for permanently securing screen mesh. Insect screens are available in aluminum or bronze construction. Gauges available - 051, 16 and 19 ga. Available for interior or exterior mounting.

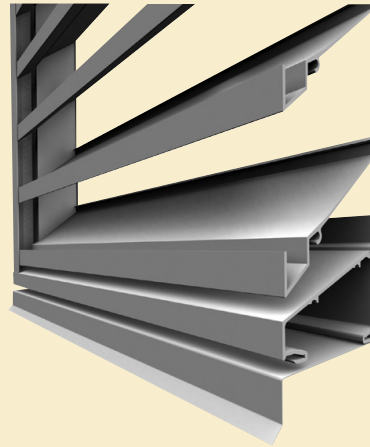
Blank-offs



The extruded polystyrene insulation is factory mounted with panel screws.

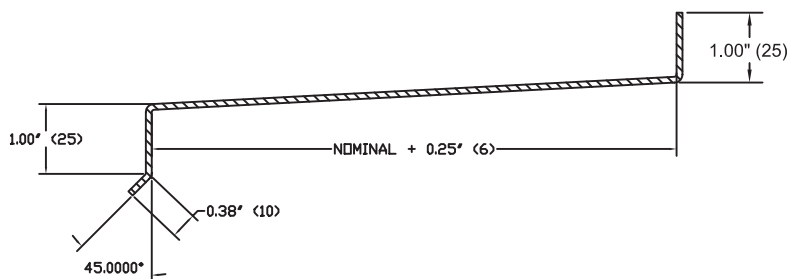
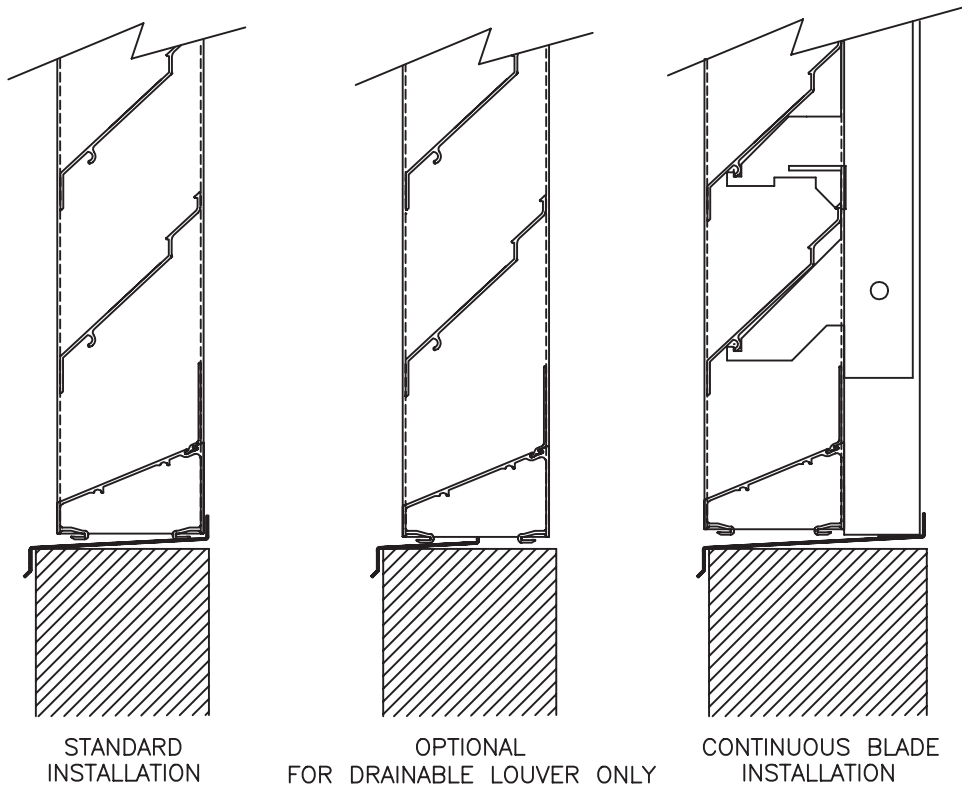
- Aluminum blank-off panels – available with or without insulation
 - Insulated blank-off panels available in 1", 1-½", 2" and 3" insulation thickness.
- Gauges available
 - 14 and 18 ga. (Aluminum construction only)

Formed Metal Sill



Loose sill is available in 4" to 10" widths in 14-gauge aluminum construction. For single sections, the length of the sill must be equal to the opening width, with a maximum section length of 120" (3048mm). For multiple sections, the minimum recommended overlap is 6" (152mm) with a sealant in between (minimum ¼" bead).

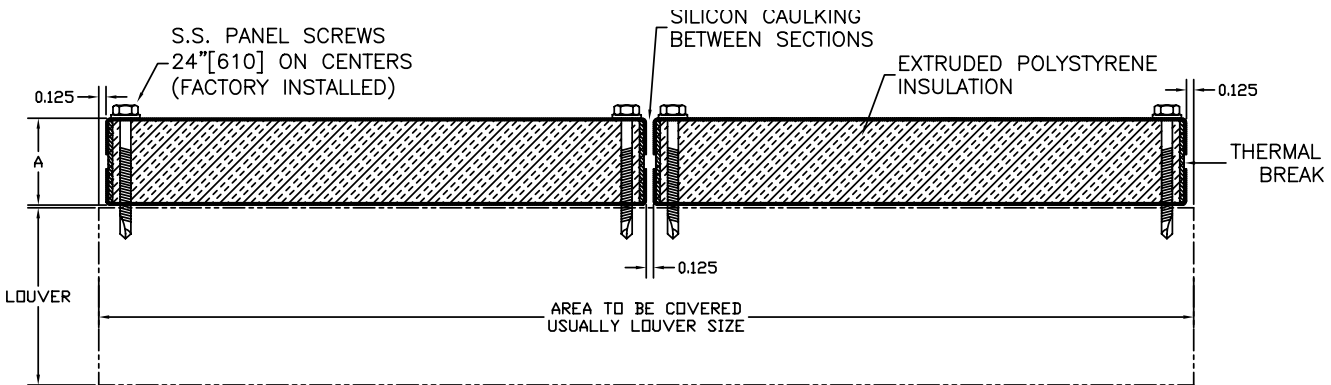
Formed Metal Sill



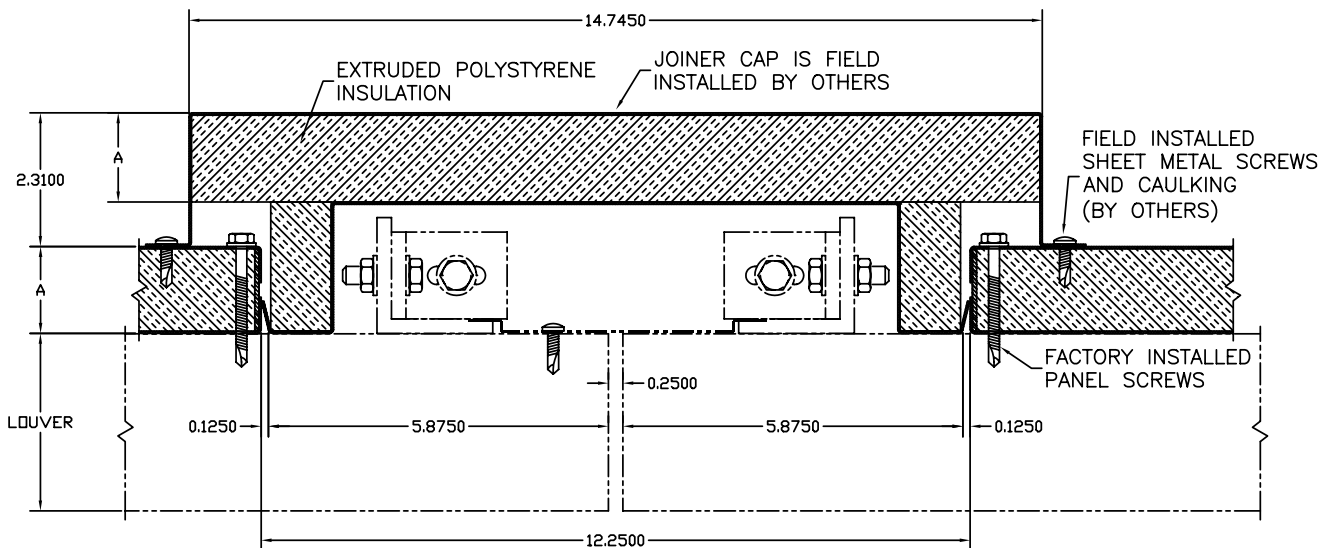
MATERIAL: ALUMINIUM 14 GA. (0.064")

- NOTE:**
- FOR SINGLE SECTION, THE LENGTH OF THE SILL MUST BE EQUAL TO THE OPENING WIDTH (MAXIMUM SECTION LENGTH = 120" (3048)).
 - FOR MULTIPLE SECTIONS, THE MINIMUM RECOMMENDED OVERLAP IS 6" WITH A SEALANT IN BETWEEN (MIN 1/4" BEAD)

**Standard / Multi-Section Insulated Blank-Offs
 with Thermal Breaks, Vertical Splicing**



TYPICAL INSULATED BLANK-OFF SECTION

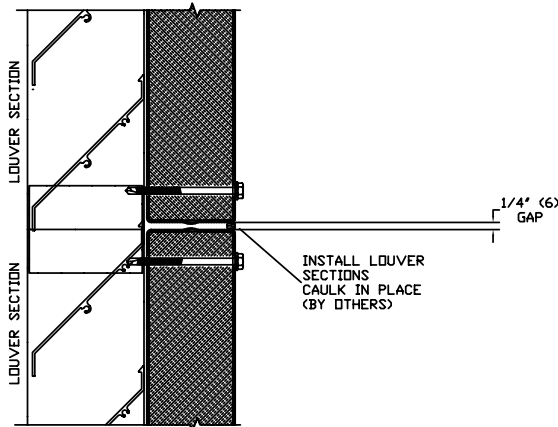


TYPICAL INSULATED JOINER CAP FOR MULLIONS OF CB LOUVERS (SHOWN)
 OR MID-SECTION STIFFENERS OF K & CB LOUVERS

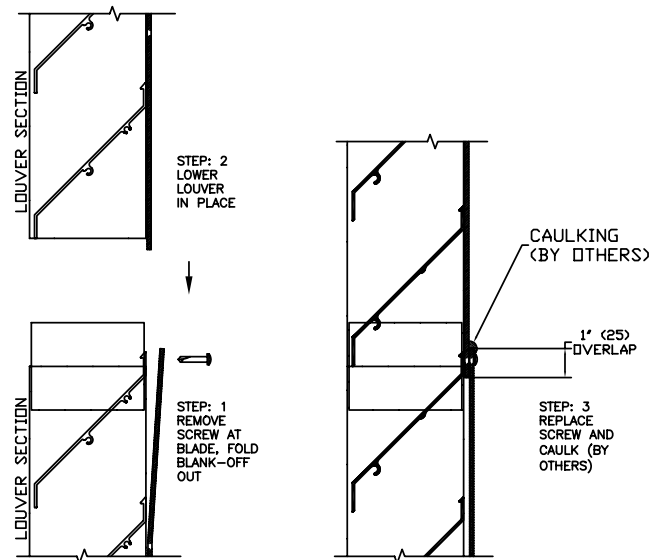
LOUVERS

Field Assembly Multi-Section Installation Screens / Blank-Offs, Vertical Splicing

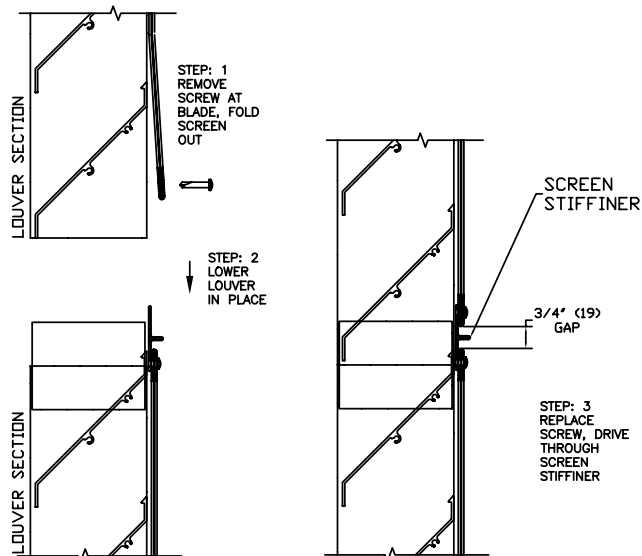
INSULATED BLANK-OFF.



NON-INSULATED BLANK-OFF.



SCREEN WITH FRAME



SCREEN WITHOUT FRAME

