

Superior Air Performance

Standard Construction

Frame

- 4" x .081"(101 x 2.1) Extruded Aluminum (6063-T5)

Blades

- Z Style Blades, .081"(2.1) Extruded Aluminum (6063-T5)
45° blade angle, 5"(127) blade spacing

Finishes

- MILL

Minimum Section Size

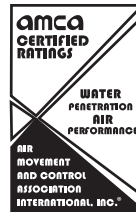
- 9" W x 10 1/2" H (229 x 267)

Maximum Section Size

- One piece construction 72" W x 120" H (1829 x 3048) or 120" W x 72" H (3048 x 1829)
- Larger louvers will require field assembly of multiple sections by others
- Larger louvers may require structural support by others

Available Options

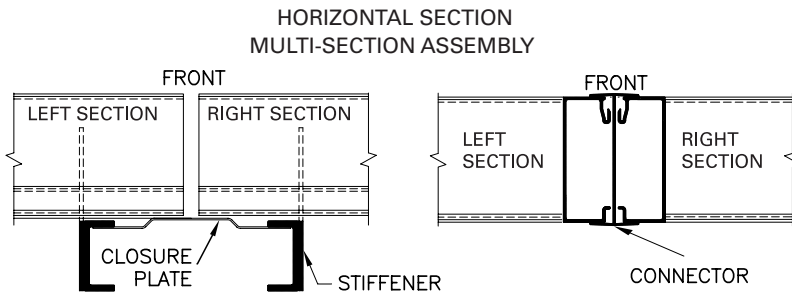
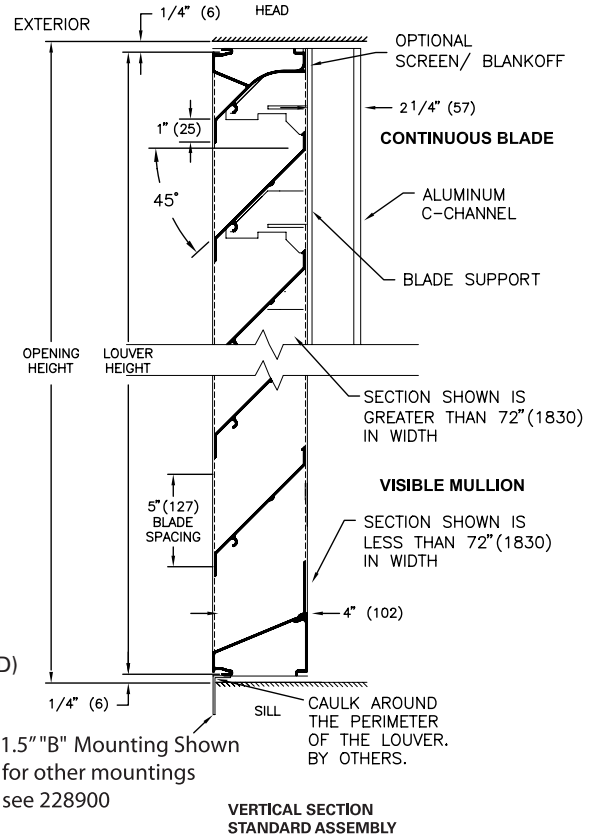
- Continuous Blade Construction (concealed mullions)
- Extended Sill (loose) 14 GA. Aluminum
- Blank-off Panels: Aluminum or Galvanized, Insulated or Non-Insulated
- Formed Flange and Mounting Angle up to 4"
- Birdscreen: Aluminum or Galvanized
- Insect Screen: Aluminum or Bronze
- Finishes: Prime Coat, Baked Enamel, Duranar , Duranar XL
- Anodized Finishes: Clear or Colour (Light Bronze, Medium Bronze, Dark Bronze, Black)



Price Industries certifies that the ZE445 shown herein is licensed to bear the AMCA Seal. The ratings shown are based on tests and procedures performed in accordance with AMCA Publication 511 and comply with the requirements of the AMCA Certified Ratings Program. The AMCA Certified Seal applies to air performance ratings and water penetration ratings.



"A" Mounting Shown for other mountings see 228900



- CB: CONTINUOUS BLADE (OPTION) VISIBLE VERTICAL MULLION (STANDARD)

ALL-WELDED CONSTRUCTION



PROJECT				CUSTOMER			
ARCHITECT				ENGINEER			
SPEC. SYMBOL				DATE			
QTY	TAG	LOUVER SIZE		OPENING SIZE		OPTIONS	UNITS: <input type="checkbox"/> IMPERIAL <input type="checkbox"/> METRIC
		WIDTH	HEIGHT	WIDTH	HEIGHT		